

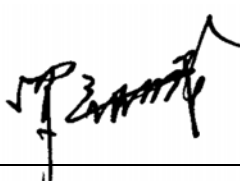


# PRODUCT SPECIFICATION

## 16×2 CHARACTERS LCD MODULE MODEL: C1602A4TVW6B-T0 Ver:1.1

- < ◆ > Preliminary Specification
- < ◇ > Final Specification

<b>CUSTOMER'S APPROVAL</b>	
<b>CUSTOMER :</b>	
<b>SIGNATURE:</b>	<b>DATE:</b>

APPROVED BY	EE REVIEWED	ME REVIEWED	PREPARED BY
侯芝云 2020.05.08	侯芝云 2020.05.08		徐浩

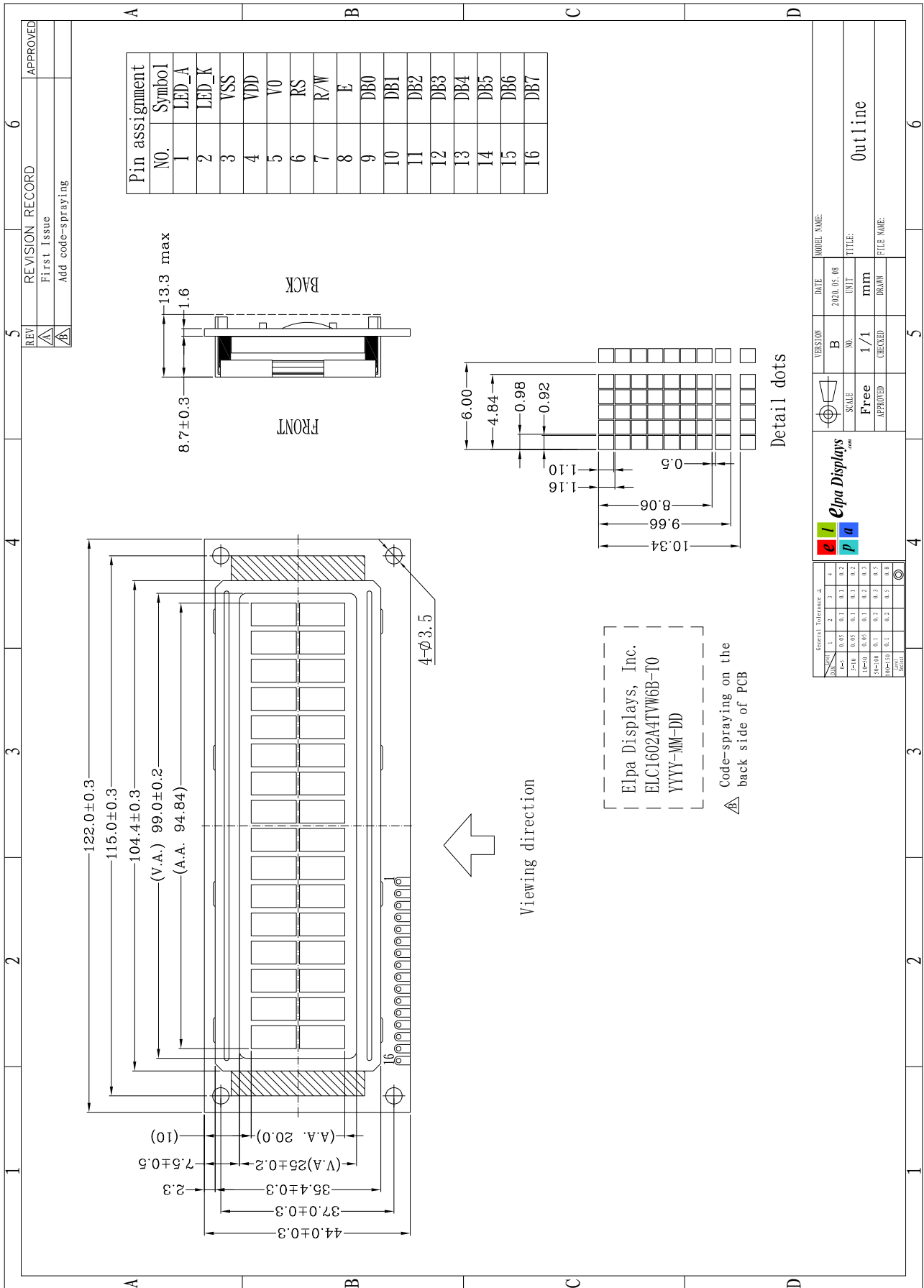
## Revision Status

Version	Revise Date	Page	Content	Modified By
Ver. 1.0	2020.05.04		First Issued	
Ver. 1.1	2020.05.08		Add code-spraying	

## 1. General Specification

No.	Item	Specification	Unit
1	Outline Dimension	122(W) x 44(H) x 13.3 (D) Max	mm
2	Viewing Area	99(H) x 25(V)	mm
3	Active Area	94.84(H) x 20(V)	mm
4	Character Size	4.84(H) x 9.66(V)	mm
5	Character Pitch	6(H) x 10.34(V)	mm
6	Number of Characters	16(H) x2(V)	Character
7	Display Type	VA	-
8	Viewing Direction	6 O'Clock	-
9	Polarizer Mode	Transmissive/Negative	-
10	LCD Drive method	1/16 duty, 1/4 bias	-
11	LCD Drive Voltage	6.0(With DC-DC circuit)	V
12	Operation Temperature	From -20 To +70	°C
13	Storage Temperature	From -30 To +80	°C
14	Controller IC	ST7066U-5H-V1	-
15	Logic Power Supply Voltage	3.3	V
16	Backlight Unit	2*2=4 LED/Side White Vf=3.3V If=2*60mA(typ)	-
17	Special Requirements	The dimension with"( )" is reference	-

## 2. Outline Dimensions



REV	REVISION RECORD	APPROVED
5	First Issue	
4	Add code-spraying	

VERSION	DATE	MODEL NAME
B	2020.05.08	

SCALE	UNIT	TITLE
Free	mm	Outline

APPROVED	CHECKED	DRAWN	FILE NAME

General Tolerance			
UNIT	1	2	3
mm	0.05	0.1	0.2
mm	0.05	0.1	0.2
mm	0.05	0.1	0.2
mm	0.1	0.2	0.5
mm	0.1	0.2	0.5